

June 12, 2025

Kanamic Network Co., Ltd.
Representative Director and President,
Takuma Yamamoto
(Securities code:3939 JSX Prime)

AI-Powered Solutions for the Nursing Care Worker Shortage

Kanamic Cloud Evolves from Nursing Care SaaS to Nursing Care AISaaS

The “2025 problem” refers to the year when Japan's baby boomers will all be 75 or older, becoming 'elderly.' This demographic shift is expected to significantly increase the number of people needing long-term care, placing a huge strain on social security, healthcare, and the workforce due to labor shortages.

As we approach 2025, the strain on Japan’s care facilities is reaching a breaking point due to worker shortages and the accelerating effects of an aging society. To solve this problem, there is a demand for “evolution of nursing care software using AI” that can fundamentally solve on-site work.

Kanamic Network Co., Ltd (Headquarter: Shibuya ward, Tokyo; Representative Director and President: Takuma Yamamoto) held a press conference at the Ministry of Health, Labor and Welfare’s press conference room on June 11, 2025, and announced the launch of Japan’s first “full-scale AI-equipped cloud-based nursing care software (nursing care AISaaS)”.

This service represents a significant upgrade to our existing nursing care SaaS. Instead of a single AI function, an autonomous AI agent is incorporated to assist with all aspects of caregiving. Designed to address the rapidly growing elderly population and increasing demand for care, this service aims to become the next-generation standard model, offering major solutions for the medical and nursing care industries.

Kanamic’s Representative Director and President Mr. Yamamoto presented a comprehensive overview of the current challenges within the nursing care industries and their background, as well as the future prospects for “Kanamic Nursing Care AI-100Vision”. This event attracted numerous media representatives and there was an active question-and-answer session.

Going forward, we will continue to leverage technology to support the caregiving industry and contribute to the realization of a sustainable super-aging society.

■About “Kanamic Cloud Service”

This is a cloud-based platform designed to facilitate collaboration between local governments, medical associations, and nursing care service providers, to contribute to the realization of a “community-based comprehensive care system” that is required in a super-aging society. The platform includes an information sharing system aimed at collaboration between multiple professions and other organizations, and a dedicated business system for care providers.





For inquiries, please contact:

Kanamic Network Co., Ltd Planning and Production Department
31F Ebisu Garden Place Tower, 4-20-3 Ebisu, Shibuya-ward, Tokyo, Japan 150-6031
TEL: 03-5798-3955 FAX: 03-5798-3951

**Saving the labor shortage crisis in care environments with AI
Providing the first full-scale AI caregiving software in Japan
to tackle the 2025 issue.**

<Shortage of caregiving personnel × Acceleration of the super-aged society:
What is the standard model for next-generation care?>

2025年6月11日 JPX Prime(Securities Code : 3939)

株式会社 カナミックネットワーク
KANAMIC NETWORK

Kanamic Nursing Care AI-100 Vision

- 1** From Nursing Care SaaS to Nursing Care AISaaSP.03
- 2** The social impact of nursing care AI agentsP.15
- 3** About Kanamic NetworkP.17

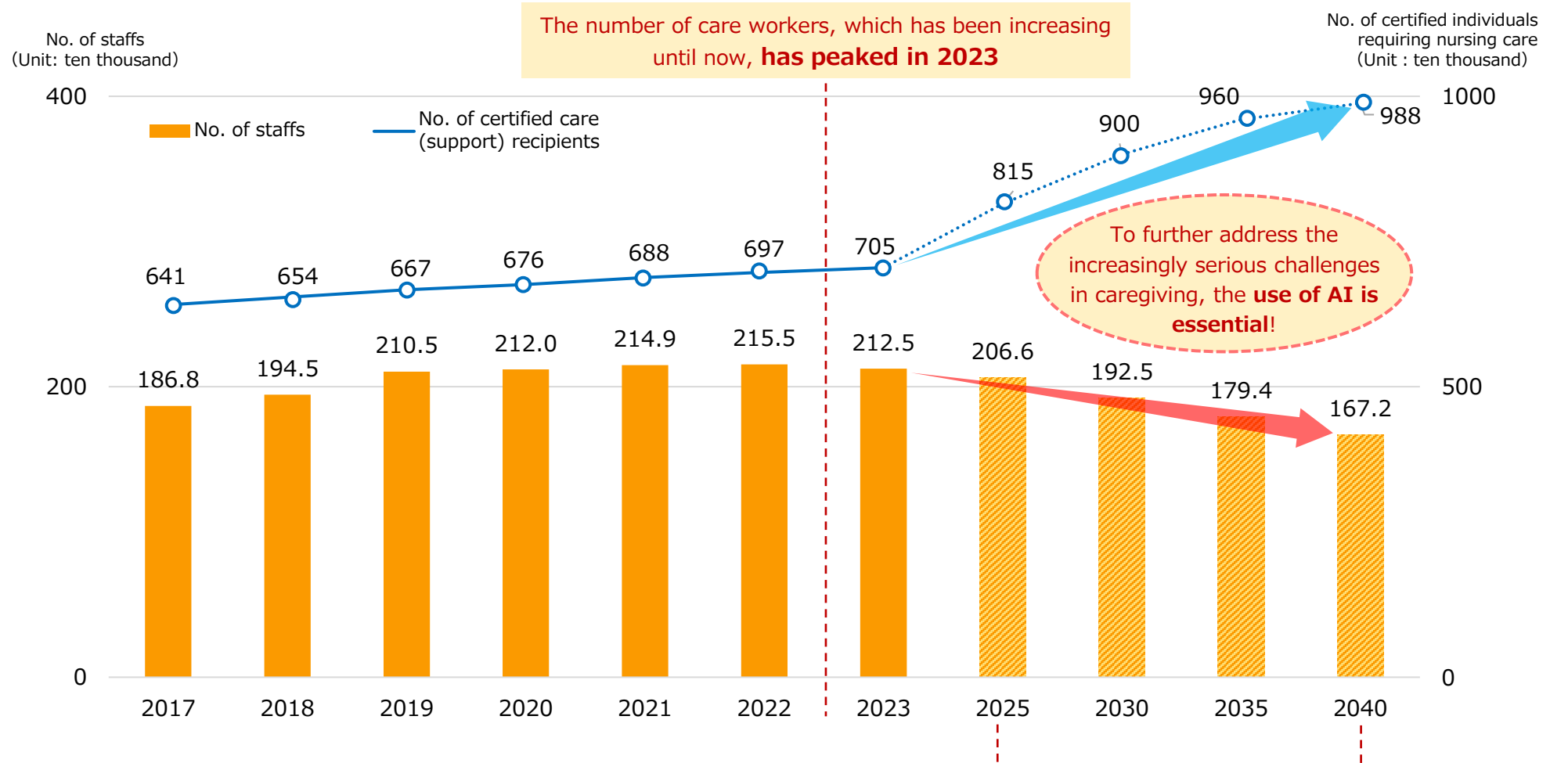
1. From Nursing Care SaaS to Nursing Care AISaaS



KANAMIC NETWORK

1-1: Estimates of the No. of Care Workers and Certified Long-Term Care Recipients

Trend in the number of nursing care staffs and the number of certified care recipients (support recipients)



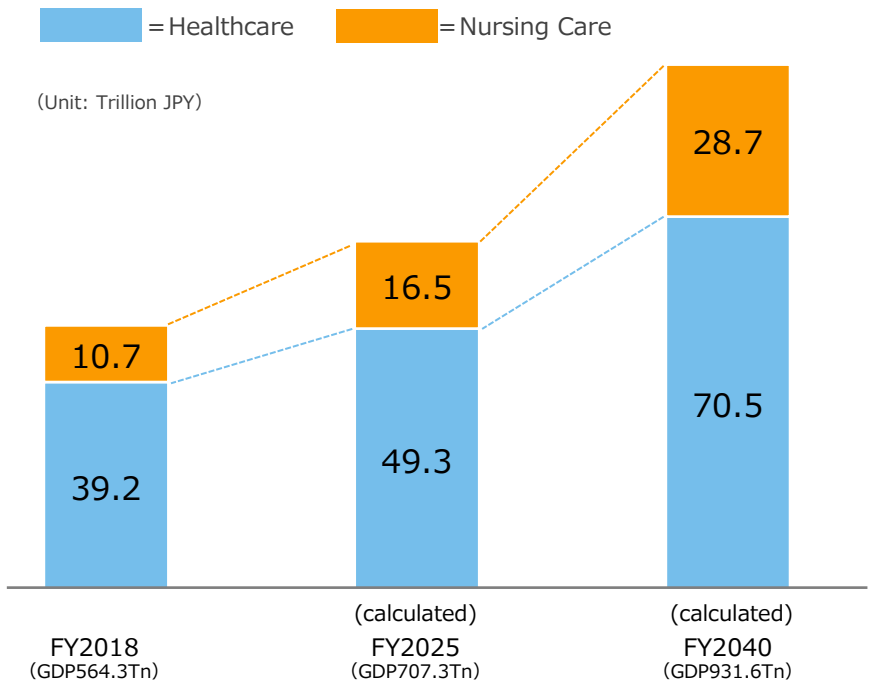
[Source]
・Ministry of Health, Labor and Welfare 「Survey on Care Service Facilities and Offices」 (No. of Care Staffs)
「Report on the status of the long-term care insurance business (No. of certified individuals requiring care (support))」
「Regarding the necessary number of caregiving staff based on the 9th Long-term Care Insurance Business Plan.」
・Ministry of Economy, Trade and Industry 「Future Projections of Certified Care-Need (Support-Need) Individuals」
※The no. of nursing care staff after 2025 is estimated by our company, applying the decrease rate from 2022 to 2023 annually.

The issue of 2025, when all members of the baby boomer generation will be aged 75 and over, becoming late-stage elderly.

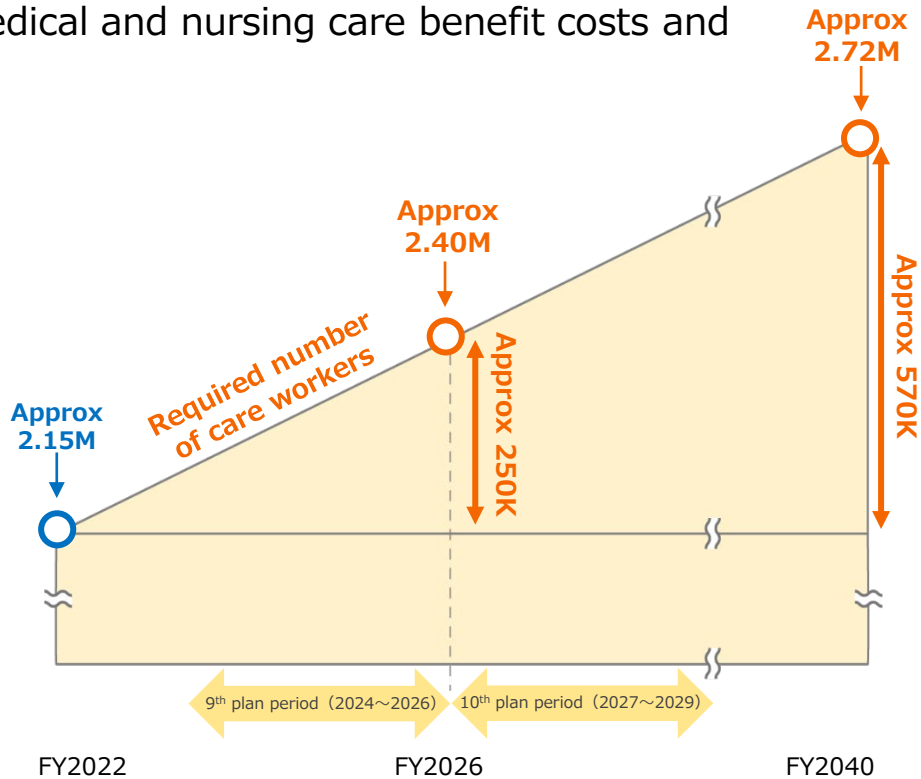
The no. of care workers needed in 2040, when the no. of individuals certified as requiring nursing care (support) peaks, is **2.72M.**

■ Outlook for Social Security Benefits in Japan

As the elderly population in Japan peaks in 2040, medical and nursing care benefit costs and the required number of staff will increase.



Future Outlook for Social Security through 2040

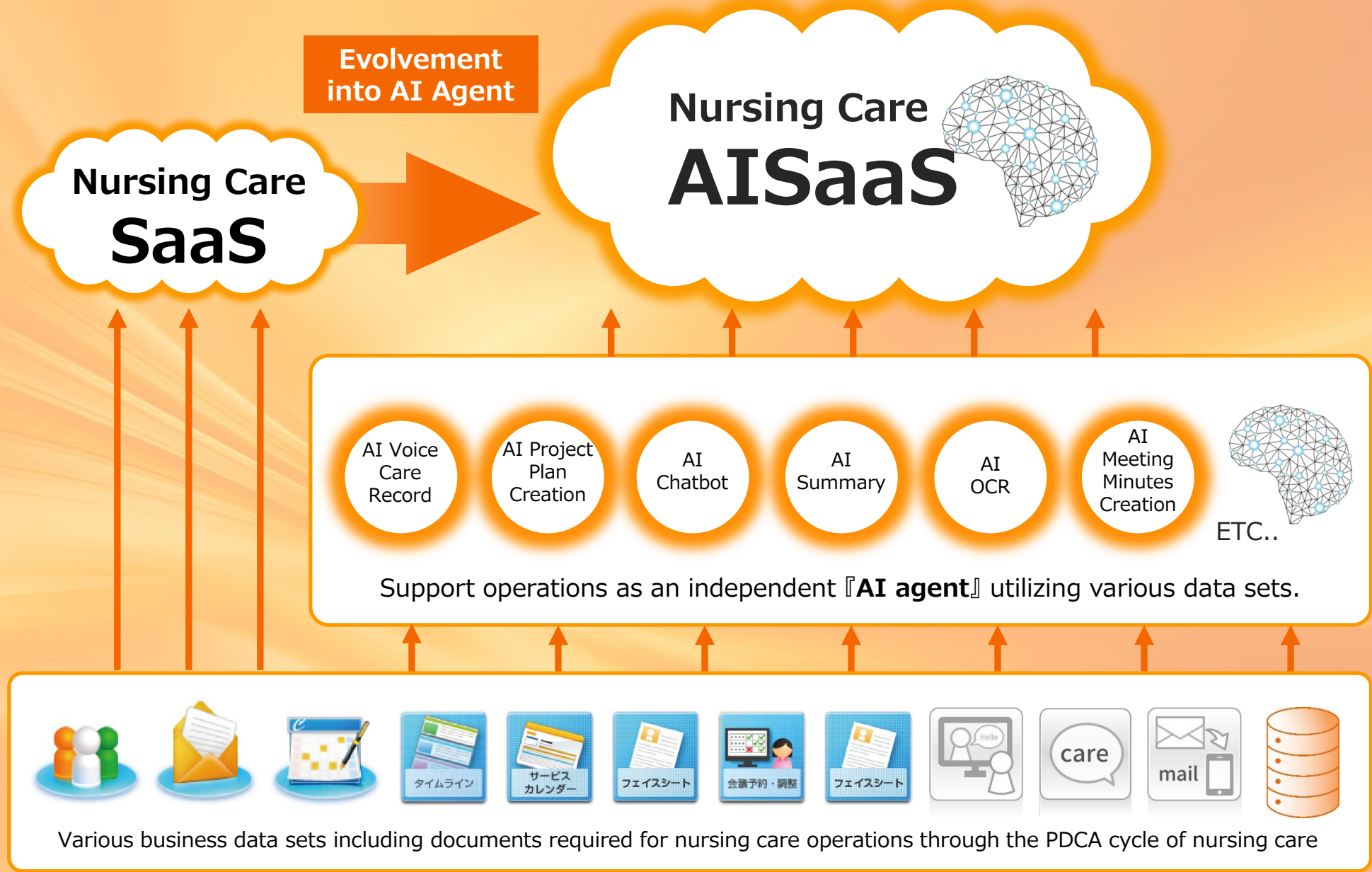


No. of Care Workers Required Based on 9th Nursing Care Insurance Business Plan

The size of the medical and nursing care market (demand) will continue to expand in the future. Correspondingly, a significant increase in nursing personnel (supply) will be necessary. However, due to the decline in the working population and the difficulties in securing foreign workers, it will be challenging to rely solely on human labor, making AX (AI transformation) essential from now on.

Source: Future Outlook of Social Security Aimed at 2040 (Discussion Material) - Economic Growth Realization Case - (Cabinet Secretariat, Cabinet Office, Ministry of Finance, Ministry of Health, Labor and Welfare, May 21, 2018)
Created based on the Ministry of Health, Labor and Welfare's 'Initiatives for Securing Nursing Care Personnel'

1-3: Towards a More Advanced Nursing Care System



KANAMIC NETWORK Nursing Care AISaaS



AI100-Vision

An AI agent equipped with '100 functions' to streamline various workflows in nursing care and evolve the entire system into a nursing care AISaaS.



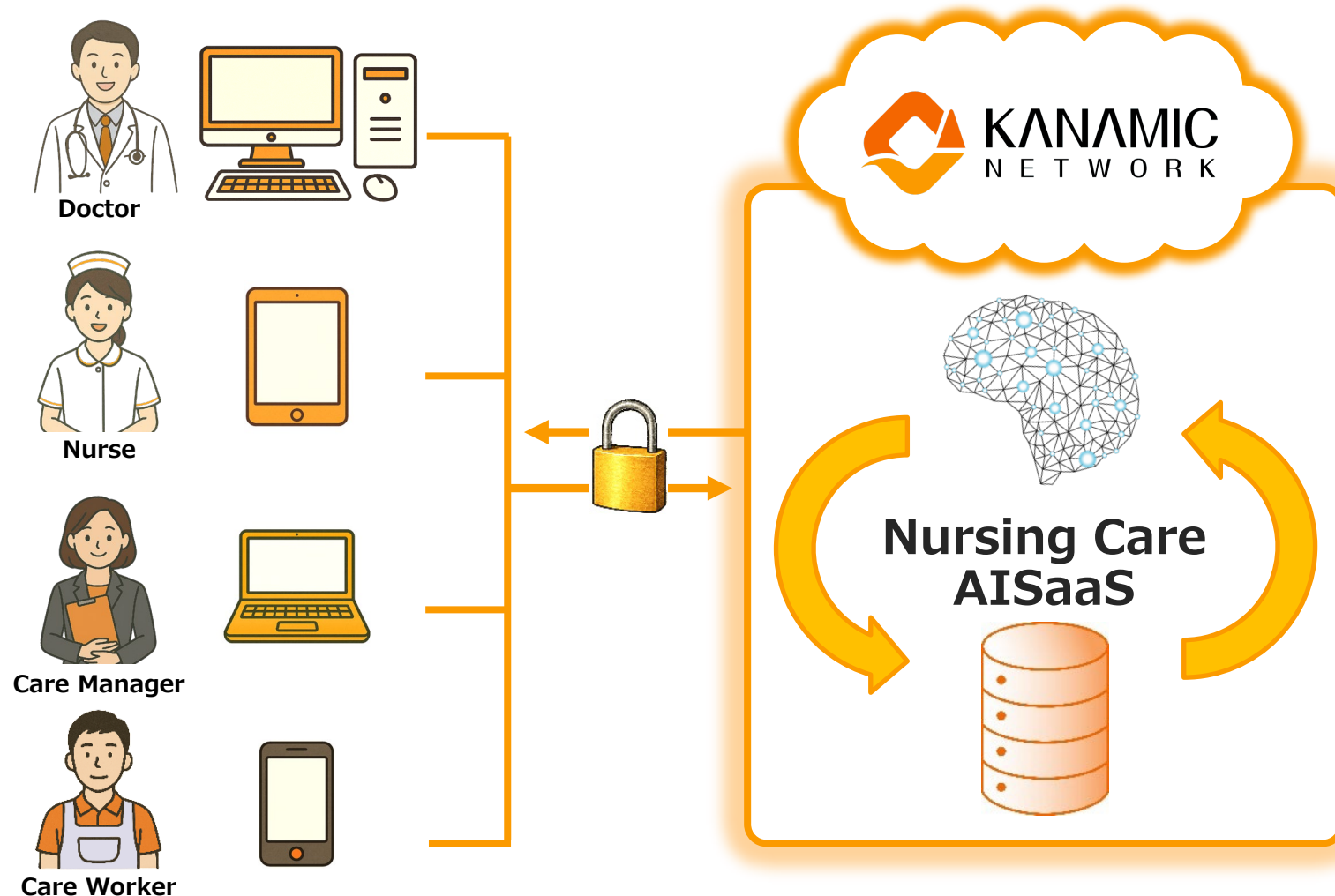
1-5: Security of Nursing Care AISaaS

■ AISaaS is Managed in a Highly Secure Cloud

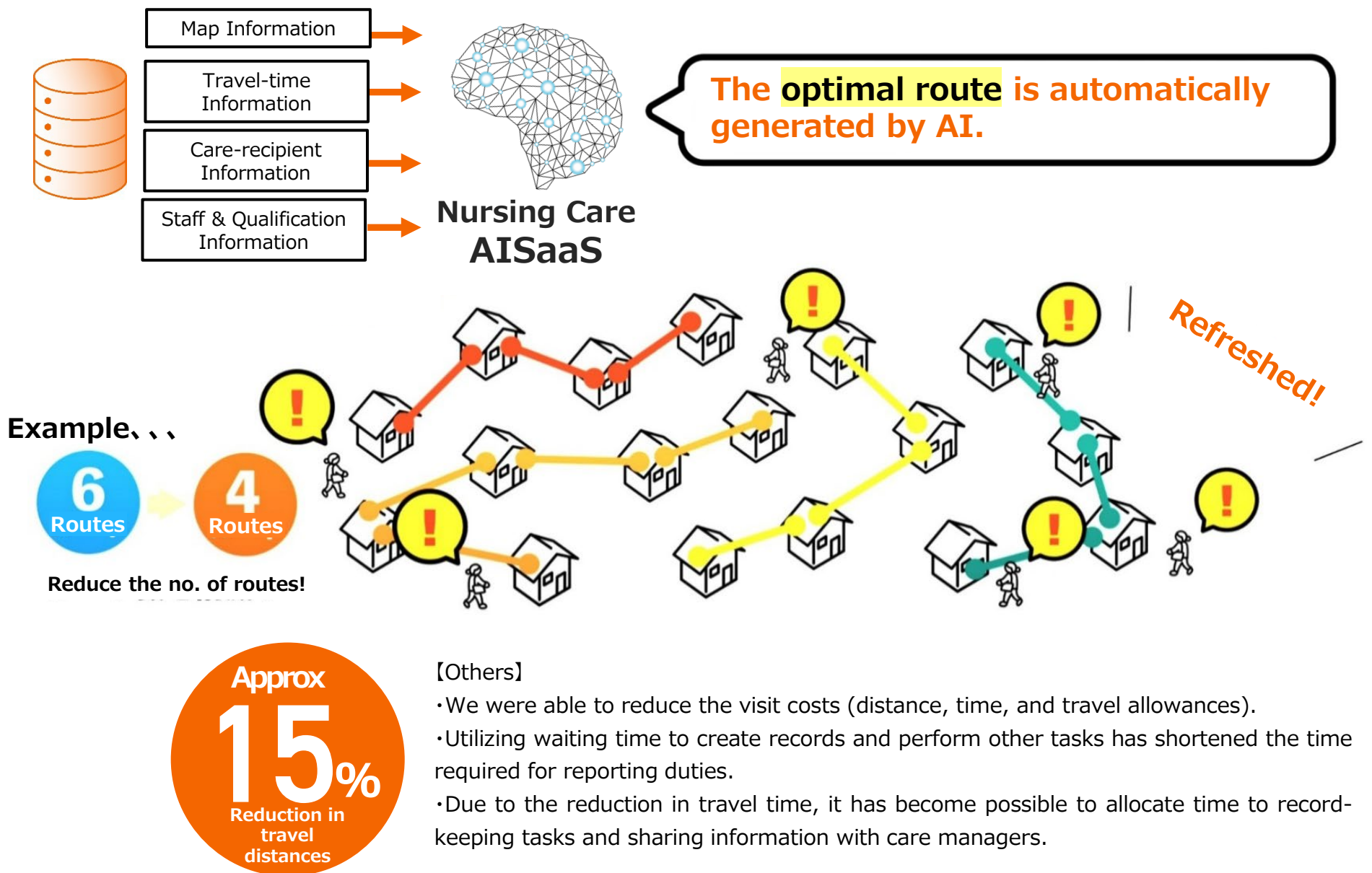
Instead of open, general-purpose generating AI, we build AI systems and handle data at domestic data centers in accordance with the "Guidelines for the Security Management of Medical Information Systems."



医療0001-1712



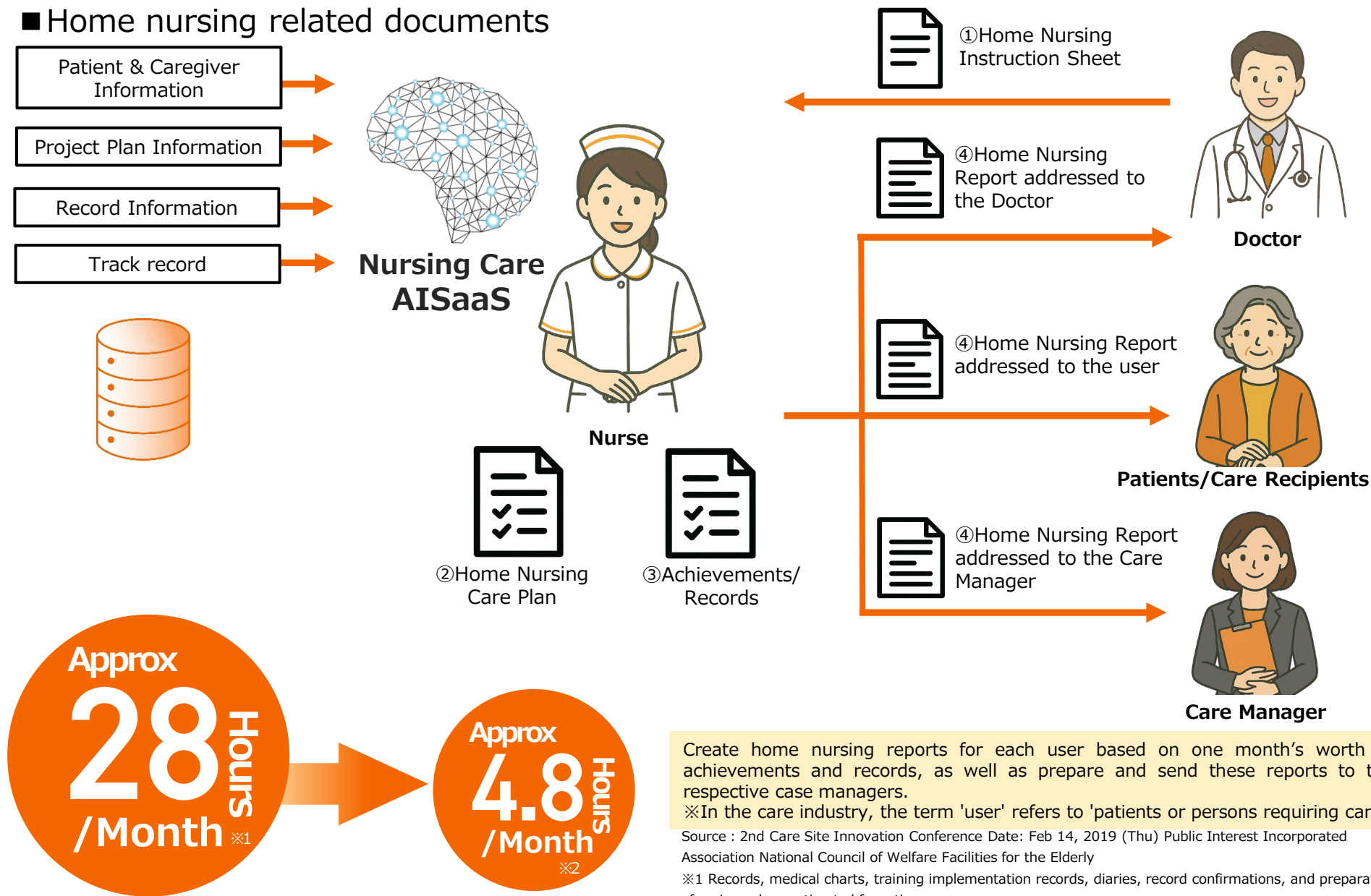
1-6:AI Agent Feature Ex1: AI Visitation Route



- [Others]
- We were able to reduce the visit costs (distance, time, and travel allowances).
 - Utilizing waiting time to create records and perform other tasks has shortened the time required for reporting duties.
 - Due to the reduction in travel time, it has become possible to allocate time to record-keeping tasks and sharing information with care managers.

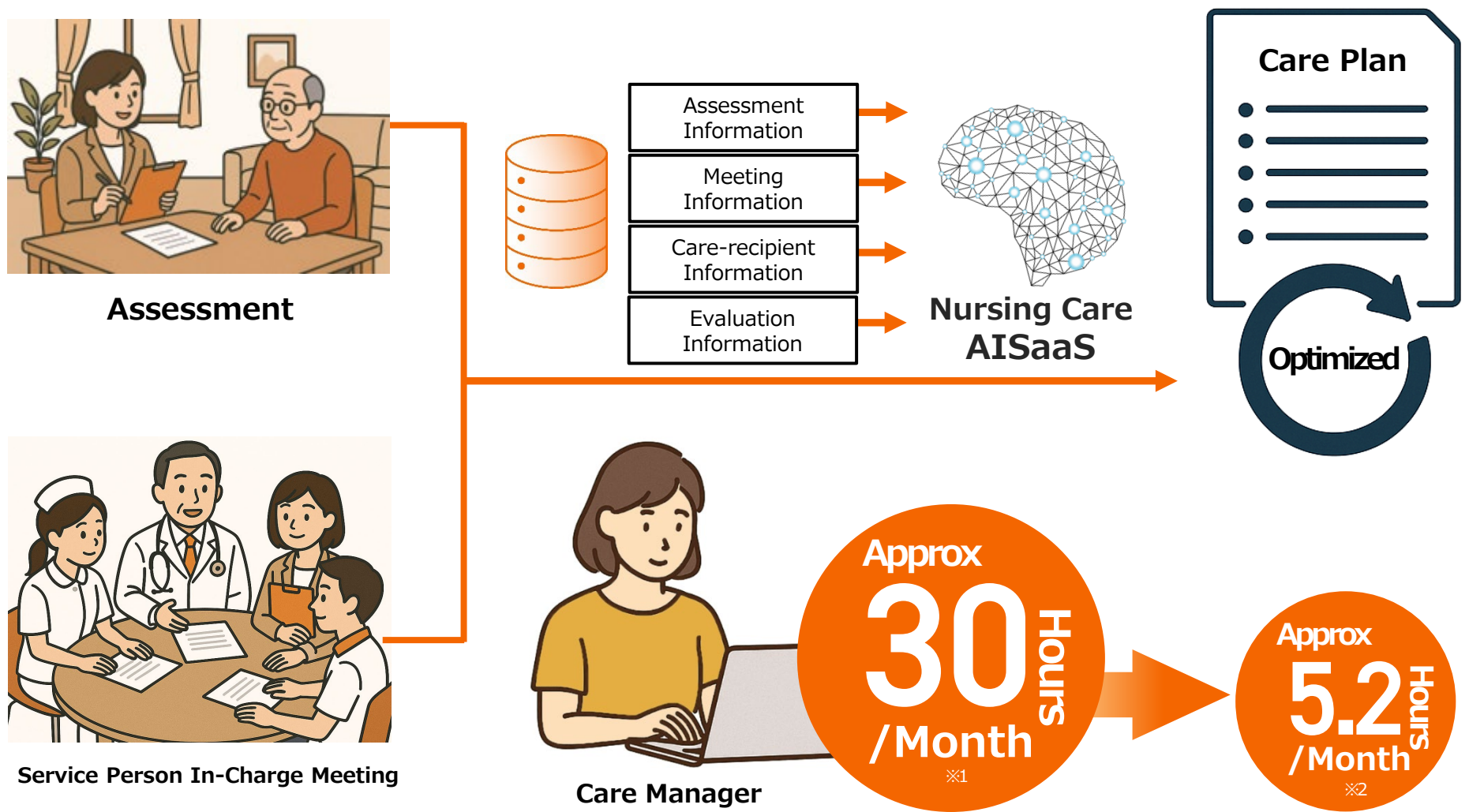
[Source] ・Ministry of Health, Labor and Welfare 「Guidelines for Improving Productivity in the Nursing Care Service Business」

1-7:AI Agent Feature Ex2: AI Summary Feature



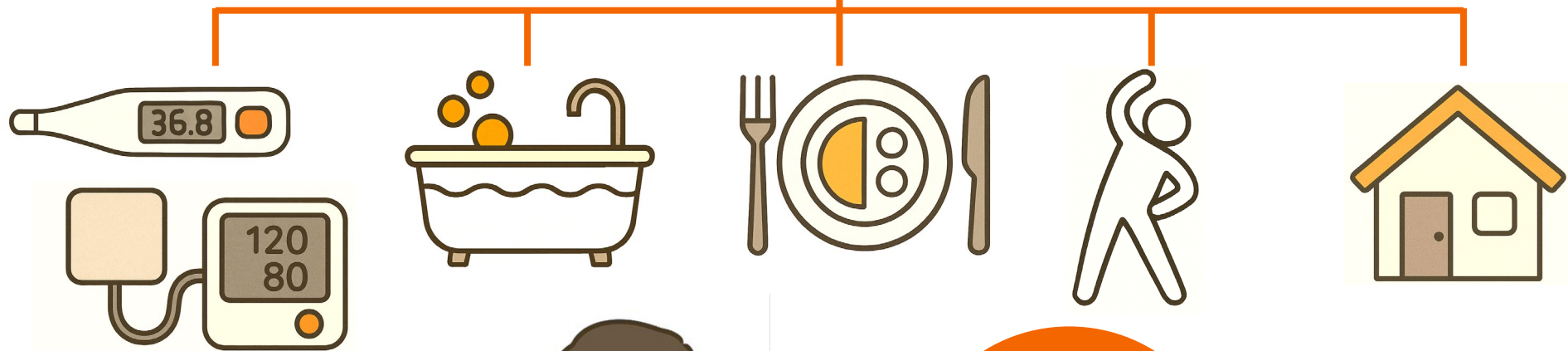
1-8:AI Agent Feature Ex3: AI Project Plan Creation Feature

■ Care Plan Creation by a Care Manager

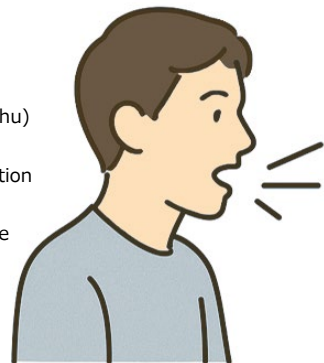


Source : 2nd Care Site Innovation Conference Date: Feb 14, 2019 (Thu) Japan National Association of Welfare Facilities for the Elderly
※1 Estimated from the time spent on creating the plan documents, etc. ※2 Estimation based on interviews from our company's user case studies (our forecast)

Nursing Care AISaaS



Source : 2nd Care Field Innovation Conference Date: Feb 14, 2019 (Thu)
Japan National Council of Welfare Facilities for the Elderly
※1 Estimation from records, medical charts, and training implementation records.
※2 Estimation based on interviews from our user implementation case studies (our forecast)



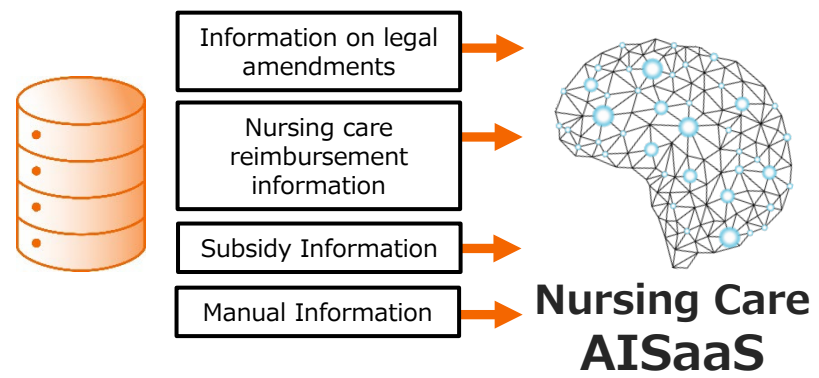
Care Worker

Approx
8.4 Hours
/Month
※1



Approx
1.5 Hours
/Month
※2

1-10:AI Agent Feature Ex5: AI Chatbot Feature



Care Worker

Q. Although only one type of service provision system addition can be included, I would like to establish two types of service provision system additions.

A. The service provision system addition is restricted to only one type within the same business office. If you want to input multiple service provision system additions, please follow the steps below. On the provision ticket screen, input another type of service provision system addition at a 'different service business office'. After that, check the 'target' for that service provision system addition on the provision ticket screen and change it to the correct service business office using 'bulk change for business offices'.



※1 Source : If you researched the "Changes in the Nursing Care Fee Revision for FY2024" from the Ministry of Health, Labor and Welfare in one minute per page.
※2 Estimation based on interviews from our company's user case studies (our forecast)

1-11: Actual customer feedback on the use of AI agents (from Facebook post)



吉武 悦代

自己紹介

その人らしさが発揮される在宅看護が大好き♪訪問看護STわんず & キャンナス田川の代表で笑顔と幸せを伝える看護を目指します♡友達申請の際は一言メッセージをお願いします（'-'）

🏠 訪問看護ステーションわんず 管理者

🏠 勤務先: 合同会社One's 代表

🏠 勤務先: キャンナス田川代表

🎓 出身校: 麻生看護大学校

🎓 出身校: 飯塚医師会看護高等専修学校

☀️ Joyous News ☀️

In the Kanamic soft we're using, amazingly! The "AI Automatic Creation Function for Home Care Nursing Reports" has been added. 🌟🌟

The report which was previously entered by hand, can now be automatically AI allowing time saving and error prevention, which is truly appreciated. 🤖💻🌟

#産みの苦しみからの卒業

It is easy to use; you just need to click the 'AI Auto Create' button after entering the records! Of course, don't forget to check the content and 'save changes'.

All the staffs are moved ❤️

I'm happy that the voices from the field are being heard properly and that things are getting more convenient. 😊

※Kanamic is a caregiving software provided by Kanamic Network Inc.

#訪問看護 #カナミック #AI自動作成 #業務効率化 #嬉しいアップデート



菅原 由美

The most tedious part has been automated. This is great !! ...

1週間 いいね！ 返信する

3 🤖❤️



吉武 悦代
菅原 由美 さま

The content of nurses' assessments are very varied. It was really hard to compile a month's worth of content into a report. 😭

Also, psychiatric home visit nursing is particularly difficult.

I was really impressed with how it neatly summarizes in just one click, helping to improve my work. 🤖

Thanks for introducing me to the representative 🙏

1週間 いいね！ 返信する

3 🤖❤️

2. The necessity of utilizing AI in a declining birthrate and aging society






KANAMIC NETWORK

2-1:Future Growth Image

■ Growth potential of nursing care AISaaS by the year 2040

As Japan's elderly population is expected to peak in 2040, the costs for medical and nursing care, as well as the required number of personnel, are set to increase. The nursing care AISaaS provided by our company has significant potential to contribute to solving the issues of personnel shortages and social security costs.

Occupation	Main Tasks	No. of necessary personnel	% of Administrative Tasks	Convert the ratio of administrative tasks into the number of required personnel	Average Monthly Salary ※1	Hours of work required for administrative tasks (/Year)	Proportion of administrative work calculated as saaly※2
 Care Manager	Preparation of plans, care records, communication and reporting to the families of residents, and creation of nursing care benefit claim forms.	230K	38%	87K	290K JPY	744Hr	0.3Tn JPY
 Nursing Staff	Record keeping, medical charts, training implementation records, handovers and reports, communication, preparation of various plans, diary and record confirmation.	2.10M	25%	525K	290K JPY	476Hr	1.8Tn JPY
 Care Worker	Record keeping, medical charts, training implementation records, handovers and reports, communication, preparation of various plans, diary and record confirmation.	2.72M	14%	381K	250K JPY	271Hr	1.2Tn JPY
Total	-	5.05M	-	993K	-	-	3.3Tn JPY

Areas that can be replaced with Nursing Care AISaaS

Source : Ministry of Health, Labor and Welfare 「Initiatives for Securing Care Workers」,
「Additional Materials on the Situation Regarding the Securing of Nurses and Other Nursing Personnel」
Research project on the training of care managers by the Japan Institute for Advanced Research.
Ministry of Health, Labor and Welfare 「2022 Edition Health, Labor and Welfare White Paper」

※1 : Average basic salary of care workers, etc. (monthly salary earners, establishments that have obtained the care worker treatment improvement supplement)

※2 : No. of required personnel x average hourly wage (converted from monthly wage) x administrative work hours

3. About Kanamic Network



3-1: Overview of the Kanamic Group

Company Name	Kanamic Network Co., Ltd
Date of Establishment	October 20th, 2000
Capital	324,120,000JPY (capital reserve: 132,060,000JPY)
Stock Listings	Tokyo Stock Exchange Prime Market (Securities code: 3939)
Business Offices	Tokyo Head Office, Hokkaido Sales Office, Nagoya Sales Office, Osaka Sales Office, Hiroshima Sales Office, Fukuoka Sales Office, Okinawa Sales Office
Main Businesses	Cloud platform service business in the fields of healthcare, nursing care, and childcare.



Securities code: 3939

Group Companies

**KANAMIC NETWORK**
康纳美克(大连)科技有限公司

< Kanamic (Dalian) Technology Co.>

Software development (Web systems, AI/IoT, Apps)



<Ruby Development Co.>
Software development utilizing the Ruby language

**URBAN FIT24**

< Urban Fit Co.>

24-hour fitness gym and franchise operations



< The World Management Pte. Ltd. >
IT consulting firm in Singapore

Employees in Group

369 (as of December 31, 2024)

3-2.Introduction of Representative Director and President



Representative Director, President

Takuma Yamamoto



1978	Born in Kyoto, Japan
2000	Joined Fujitsu System Solutions, Inc. (now Fujitsu Limited) after graduating from university Gained experience in the internet division by working on product planning and development, as well as large-scale contract development.
2005	Joined Kanamic Network, Inc. as Director
2011~	Co-researcher at the University of Tokyo, Institute of Gerontology
2012~	Outpatient researcher at the National Cancer Center
2014	Appointed President and Representative Director of Kanamic Network, Inc. (present post)
2016	Listed on the Tokyo Stock Exchange Mothers
2018	Advisor of the Japan Startup Support Association (present post) Listed on the First Section of the Tokyo Stock Exchange
2020	Director of the Tokyo New Business Association (present post)
2022	Transition to the Tokyo Stock Exchange Prime Market Appointed Chairman of the Board, Urban Fit Corporation (present post)
2023	Appointed President and Representative Director of Ruby Kaihatsu Co.
2024	Ministry of Education, Culture, Sports, Science and Technology - Entrepreneurship Promotion Ambassador (present post)
2025	Part-time lecturer at University of Tsukuba (present post)

Served as a member of committees and subcommittees related to medical care, nursing care, childcare, and ICT at the Ministry of Health, Labor and Welfare, Ministry of Internal Affairs and Communications, etc.

KANAMIC NETWORK Nursing Care AISaaS

AI100-Vision